

5. General Specifications:

SENSOR SET: Implementation 02

CURRENCY AND INTERFACES See Software Description document

ELECTRICAL SPECIFICATION:

Operating Voltage	Maximum Operating Current	Maximum Current
24V AC/34V DC	0.36A	2.0 A

Use only current limiting CSA or UL recognized CLASS 2 Power Supply.

OPERATING TEMPERATURE: -18 to +60 degrees Celsius

TOTAL WEIGHT: 1.2 kg

FEATURES: CASHCODE MDB interface (coated boards)
Standard Plastic, Handled Bill width 70 mm

ENCLOSURE: Bill Acceptor with a Stacker
User's Guide
Software description
Accessories:
Front Label
MDB Harness, Part # OPT-HS-MDB
Holder with Flat Tie, Part #OPT-MKST-HFT

OPTIONAL ACCESSORIES:
MDB test adapter; Part # OPT-AD-MDB



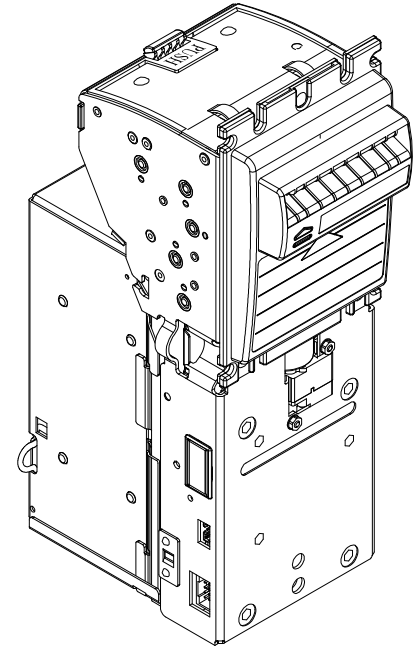
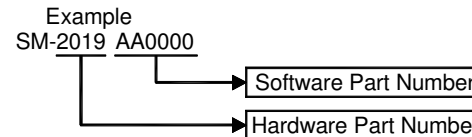
CashCode[®] User's Guide

A division of **CRANE** PAYMENT SOLUTIONS

Bill Validator with Stacker

Hardware part # **SM-2019**

The Part Number on the Label includes Hardware Part Number and Software Part Number.



1. DIP Switches Setting

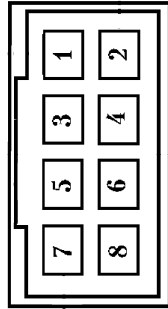
See Software Description document.



CashCode A Crane Co. Company
553 Basaltic Rd. Concord, Ontario Canada. L4K 4W8
TEL: (905) 303-8874 (800)-584-2633
FAX: (905) 303-8875 (800)-593-2633

2. MDB connector pinout

Pin	Circuitry	Wire colour
1	AC / DC(-)	Brown
2	AC / DC(+)	White
3	GND	-
4	Reserved (OUT)	-
5	Master Receive	Black
6	Reserved (IN)	-
7	Common	Green
8	Master transmit	Red

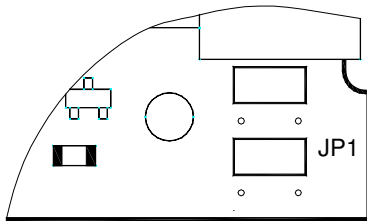


Mating connector:

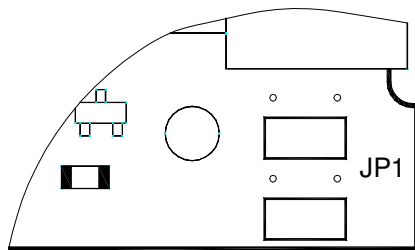
MOLEX: Dual Row Interim Clip #15-04-5084 - 1 pcs.
 Single Row Crimp Housing #50-57-9304 - 2 pcs.
 Fem. Box, Crimp Terminals #16-02-0086 - 7 pcs.

3. Jumper Settings

For MDB Mode (Default)



Connection to OPT-AD-MDB



4. Diagnostics

Count the number of flashes and compare with the diagnostic chart below:

## of flashes	Malfunction
1 red on black	Cassette is removed from bill acceptor
3 red on black	Cassette is full
4 red on black	Failure of stacker mechanism
5 red on black	Failure of capacitance sensors
6 red on black	Failure of optical sensors
7 red on black	Failure of magnetic sensors
8 red on black	Transporting motor failure (timeout)
9 red on black	Speed of transporting motor is too fast
11 red on black	Bill pathway is not empty (bill is jammed)
12 red on black	Fail rejecting a bill. Bill is in the entry slot of the cassette.
1 green on red	COM port CRC Error
2 green on red	Internal CRC Error
3 green on red	Improper CCMS format
4 green on red	CCMS is absent
5 green on red	Improper type of CCMS
6 green on red	Download Error

To eliminate occasional disconnection of the cable use self-sticking Holder and cable Flat Tie as shown on the picture.

